

State of Wyoming Corner Record

(In compliance with the CORNER PERPETUATION AND PILING ACT, Wyoming Statutes, 1977, Section 36-11-101, et. seq., and the Rules and Regulations of the Board of Registration for Professional Engineers and Professional Land Surveyors.)

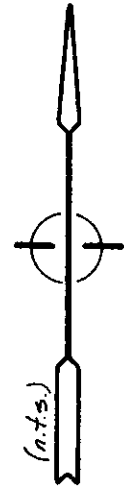
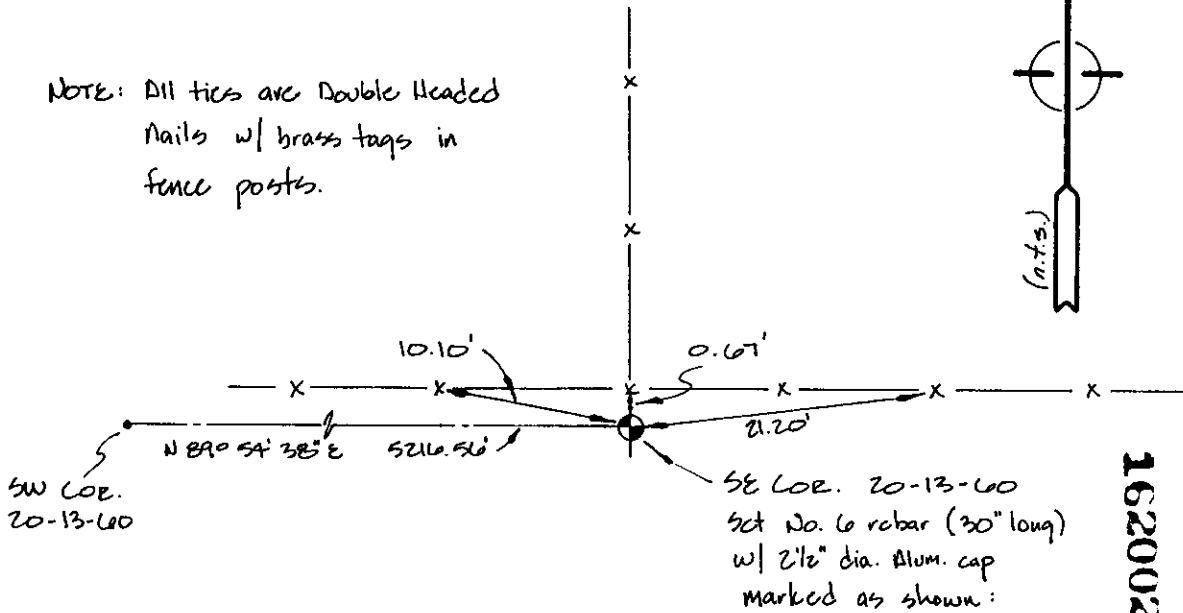
Reverse side of this form may be used if more space is needed.

Record of original survey and citation of source of historical information (if corner is lost or obliterated). Description of corner monumentation evidence found and/or monument and accessories established to perpetuate the location of this corner. Sketch of relative location of monument, accessories, and reference points with course and distance to adjacent corner(s) (if determined in this survey). Method and rationale for reestablishment of lost or obliterated corner.

SE COR. 20-13-60

Set No. 6 rebar (30" long)
w/ 2 1/2" dia. Alum. cap
marked as shown below:

NOTE: All ties are Double Headed
Nails w/ brass tags in
fence posts.

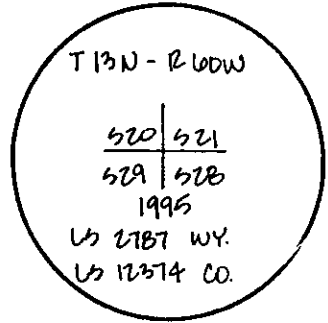


1995 MAY 12 PM 2:16

162002

RECEIVED
LARRY G. INTERMILL
CLERK

Established the position of the SE COR. of Sec. 20-13-60 at the intersection of an existing E-W fence and an existing N-S fence. No evidence of original corner found.



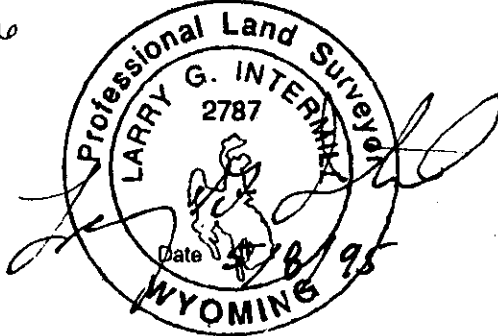
Date of Field Work: 4-12-95 Office Reference: _____

CROSS INDEX DIAGRAM

| | | | | | | | | | | | | | | | | | | | | | | | | | |
|---|----|---|----|---|----|---|---|---|----|----|----|----|----|----|----|----|----|----|----|----|----|----|----|----|----|
| A | 1 | 2 | 3 | 4 | 5 | 6 | 7 | 8 | 9 | 10 | 11 | 12 | 13 | 14 | 15 | 16 | 17 | 18 | 19 | 20 | 21 | 22 | 23 | 24 | 25 |
| B | | | | | | | | | | | | | | | | | | | | | | | | | |
| C | 6 | | 6 | | 4 | | | | 3 | | | | | | | | | | | | | | | | |
| D | | | | | | | | | | | | | | | | | | | | | | | | | |
| E | | | | | | | | | | | | | | | | | | | | | | | | | |
| F | | | | | | | | | | | | | | | | | | | | | | | | | |
| G | 7 | | 8 | | 9 | | | | 10 | | | | | | | | | | | | | | | | |
| H | | | | | | | | | | | | | | | | | | | | | | | | | |
| I | | | | | | | | | | | | | | | | | | | | | | | | | |
| J | | | | | | | | | | | | | | | | | | | | | | | | | |
| K | | | | | | | | | | | | | | | | | | | | | | | | | |
| L | 15 | | 17 | | 16 | | | | 15 | | | | | | | | | | | | | | | | |
| M | | | | | | | | | | | | | | | | | | | | | | | | | |
| N | | | | | | | | | | | | | | | | | | | | | | | | | |
| O | | | | | | | | | | | | | | | | | | | | | | | | | |
| P | 19 | | 20 | | 21 | | | | 22 | | | | | | | | | | | | | | | | |
| Q | | | | | | | | | | | | | | | | | | | | | | | | | |
| R | | | | | | | | | | | | | | | | | | | | | | | | | |
| S | | | | | | | | | | | | | | | | | | | | | | | | | |
| T | 30 | | 29 | | 28 | | | | 27 | | | | | | | | | | | | | | | | |
| U | | | | | | | | | | | | | | | | | | | | | | | | | |
| V | | | | | | | | | | | | | | | | | | | | | | | | | |
| W | | | | | | | | | | | | | | | | | | | | | | | | | |
| X | 31 | | 32 | | 33 | | | | 34 | | | | | | | | | | | | | | | | |
| Y | | | | | | | | | | | | | | | | | | | | | | | | | |
| Z | | | | | | | | | | | | | | | | | | | | | | | | | |

Firm/Agency, Address
PREPARED BY: _____
This corner record was prepared by me or under my direction and supervision.

INTERMILL LAND SURVEYING, INC.
1301 N. Cleveland Ave.
Loveland, Co. 80537
(970) 669-0510



1786

Corner Name: SE COR. 20-13-60 Section: 20 T13N R60W; (with P.M. Cross Index No: R-9)
SRR/PLS/PLSW: March 1994 (CLCR, SJA)